

Implementing the Growth Plan for the Greater Golden Horseshoe 2.0:

LESSONS LEARNED SO FAR
TO INFORM FUTURE SUCCESS?

Marcy Burchfield

Executive Director, Neptis Foundation

JUNE 20, 2017

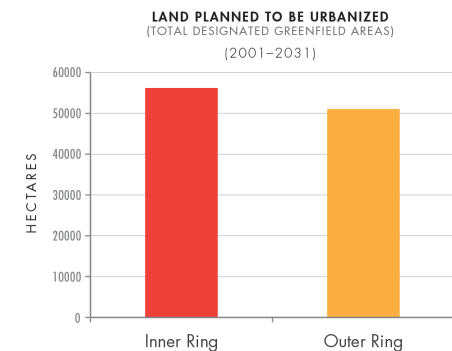
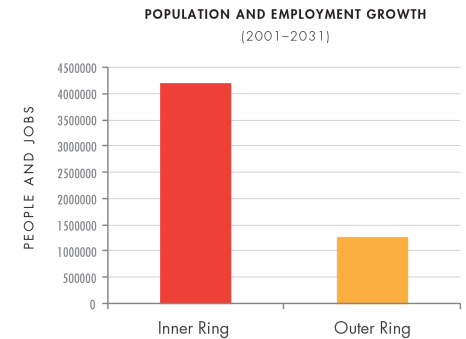


IMPERATIVE FOR GROWING DIFFERENTLY



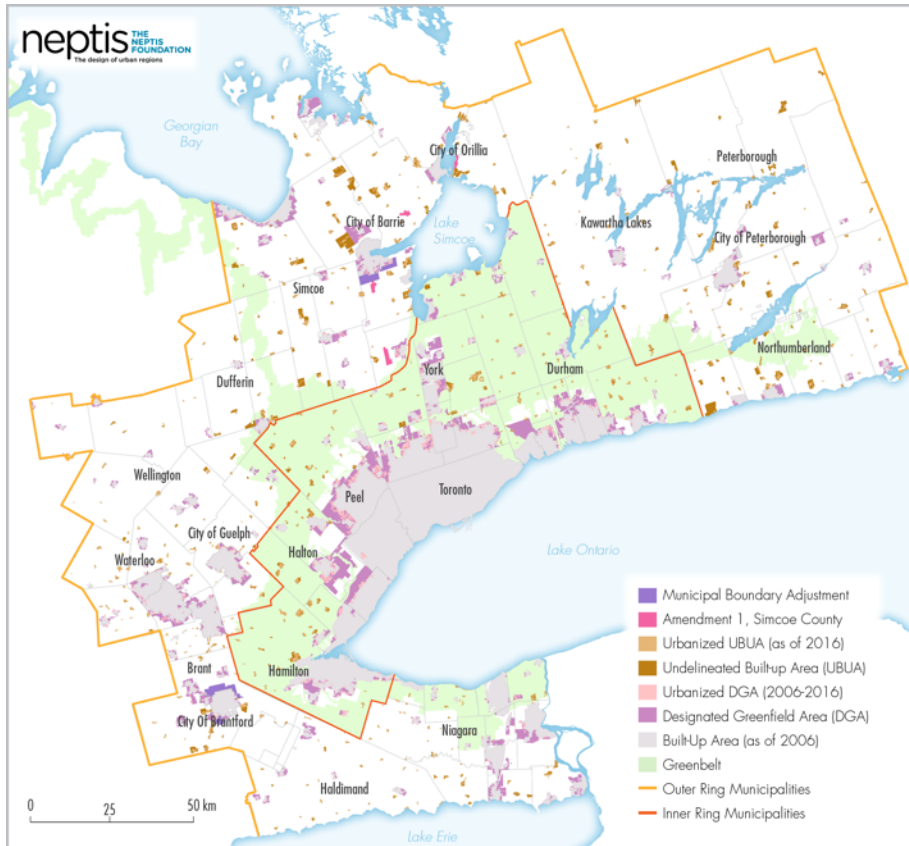
- Extended metropolitan region: 32,000 km²
- Population (2011): 8.7 million
- Employment (2011): 4.3 million
- Historical population increase (1971-2011): ~ 100k-125k persons per year
- Projected population growth (2041): 12-13 million

HOW & WHERE THE REGION IS SLATED TO GROW



Source: Implementation of the Growth Plan for the Greater Golden Horseshoe: Has the Strategic Regional Vision been Compromised?, Neptis Foundation, 2013.

USING LAND MORE **EFFICIENTLY** OVER THE NEXT 25 YEARS

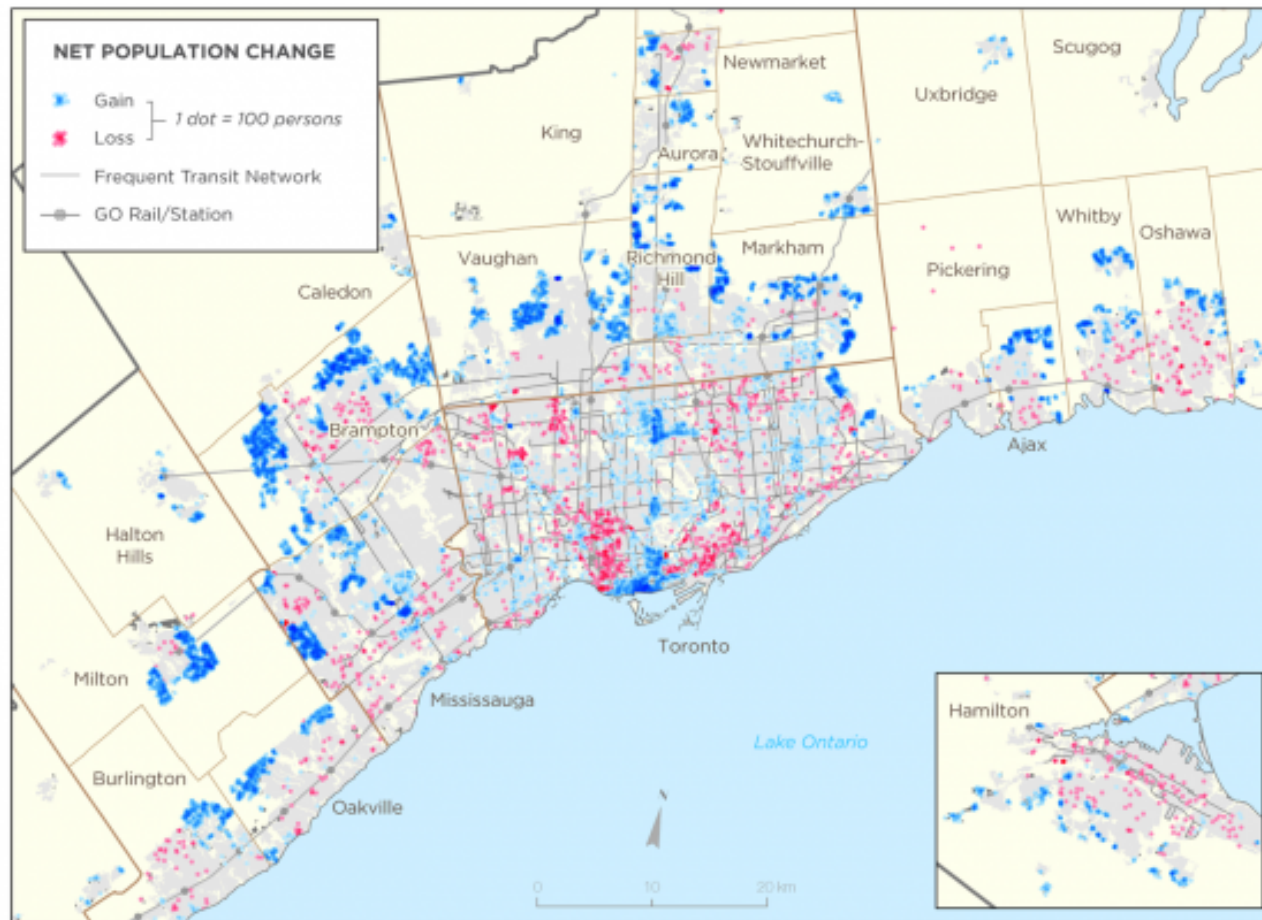


**~125,500
HECTARES***

***GROSS AREA OF LAND SET ASIDE
BY MUNICIPALITIES & PROVINCE
IN THE GREATER GOLDEN
HORSESHOE FOR GROWTH
(PEOPLE AND JOBS) TO 2031 &
BEYOND.**

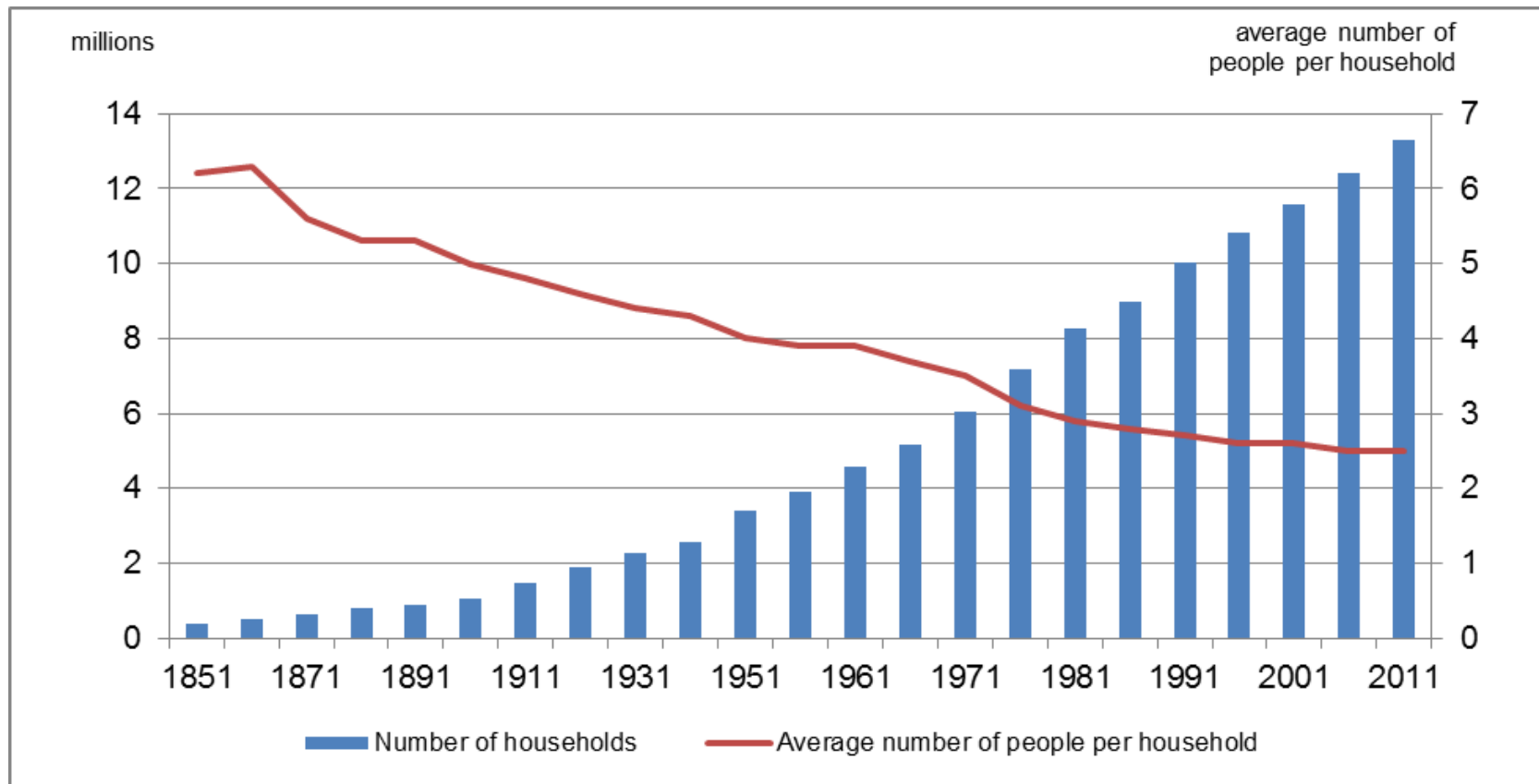
Source: *An update on the total land supply: Even more land available for homes and jobs in the Greater Golden Horseshoe.* Neptis Foundation, 2017.

ALIGNMENT OF GROWTH & TRANSIT



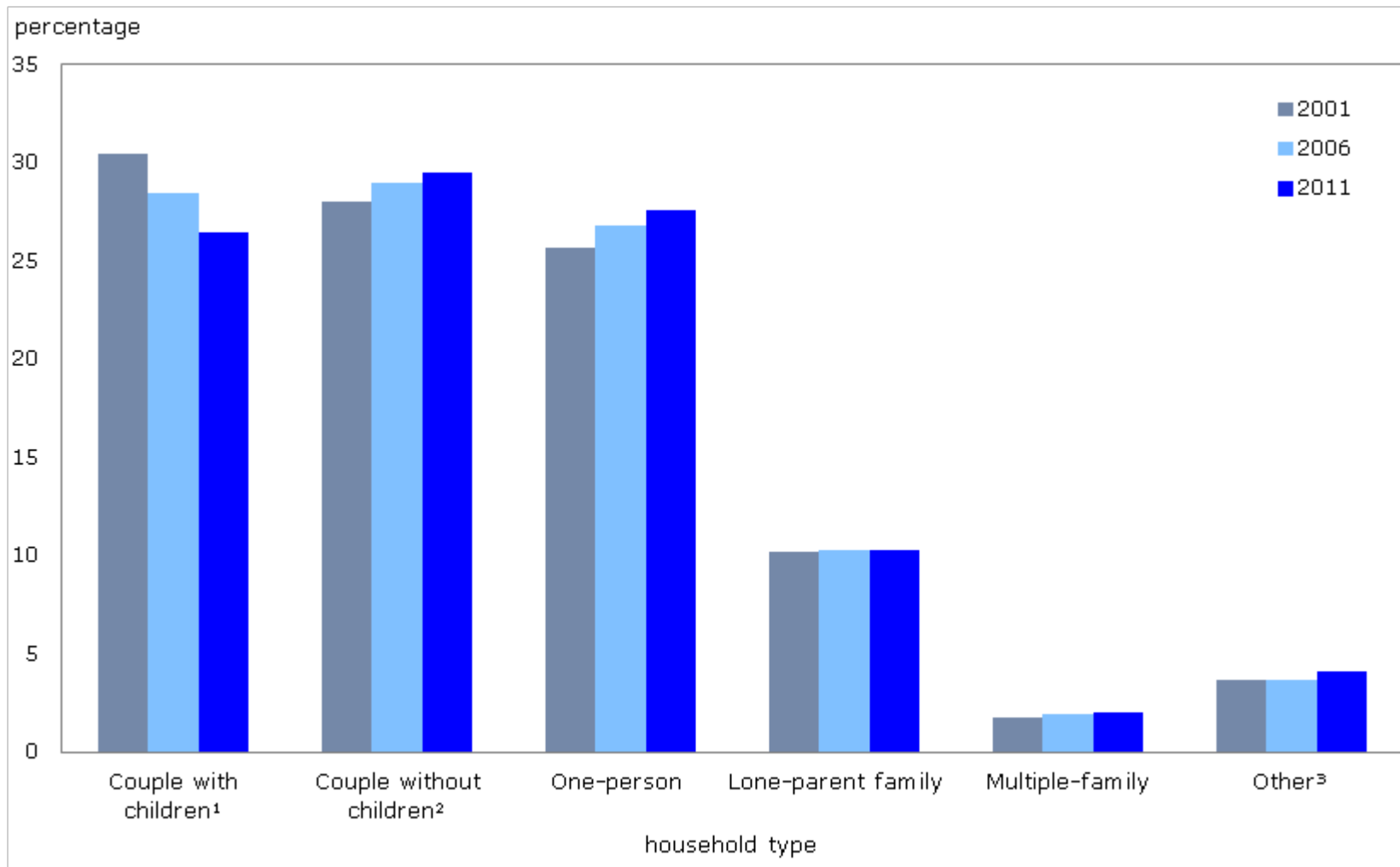
Between 2001-2011, only 18% of net population growth located near frequent transit network.

CHANGING HOUSEHOLDS IN CANADA, LONG-TERM TRENDS

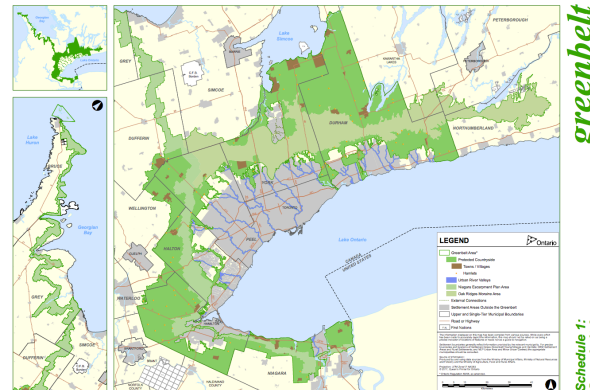
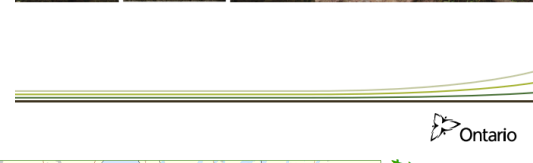
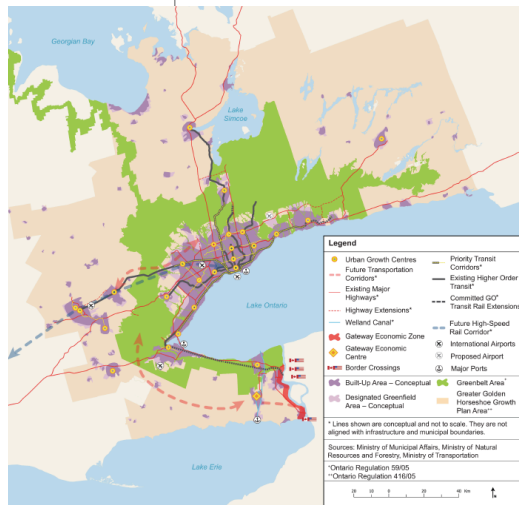


Source: Statistics Canada, 2011

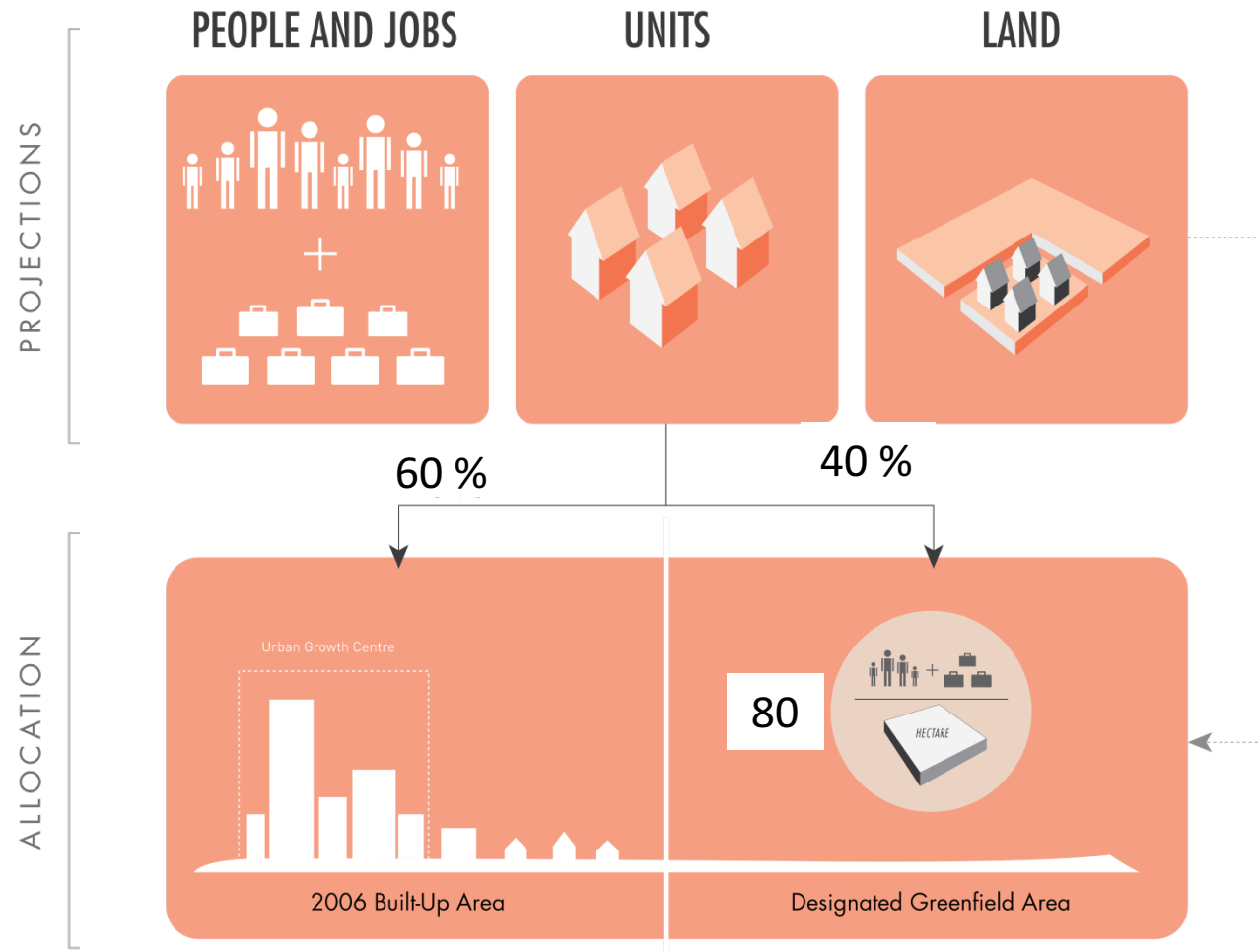
CHANGING HOUSEHOLDS IN CANADA, LONG-TERM TRENDS



Source: Statistics Canada, 2011

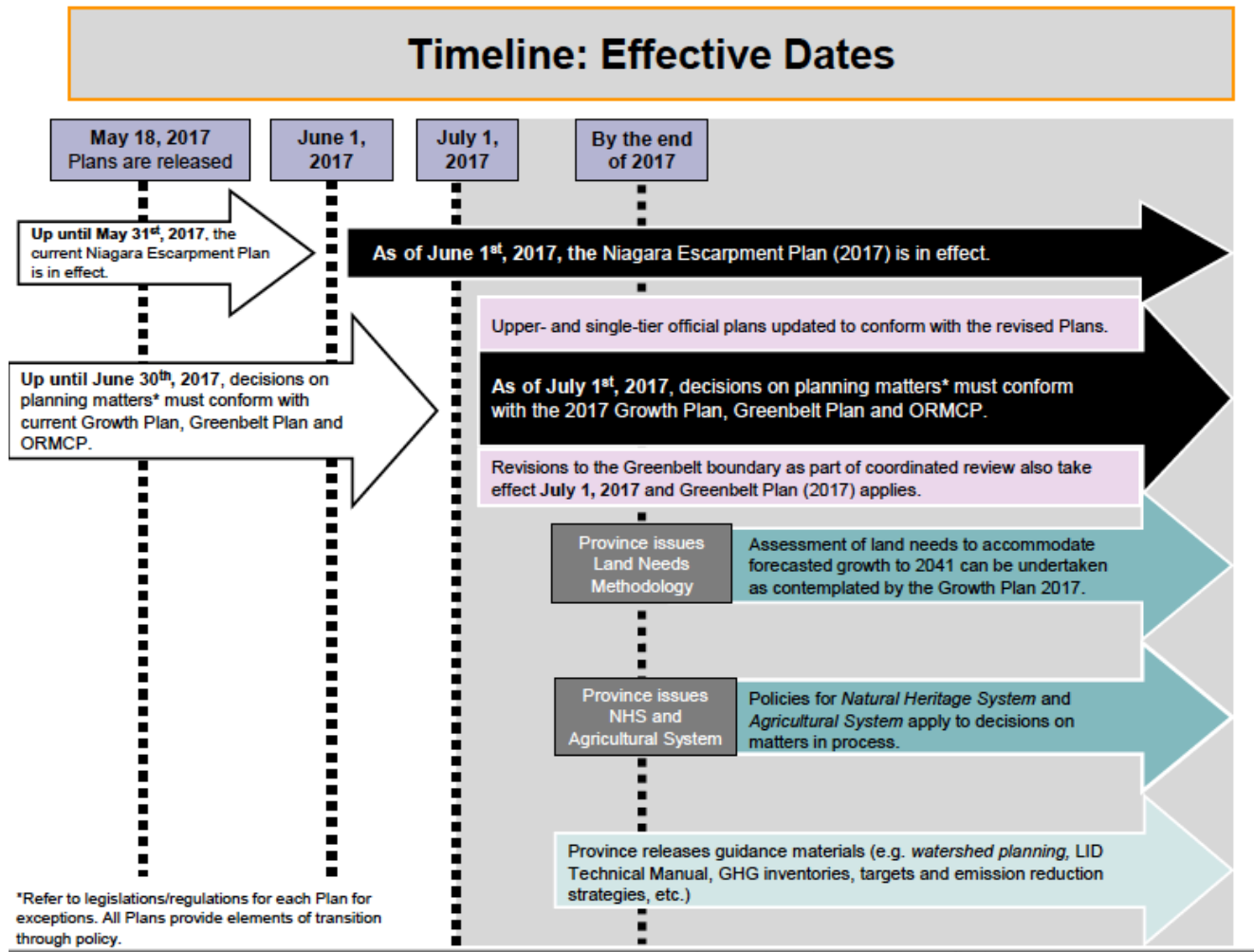


DRIVERS OF **CHANGE**: INTENSIFICATION & DENSITY



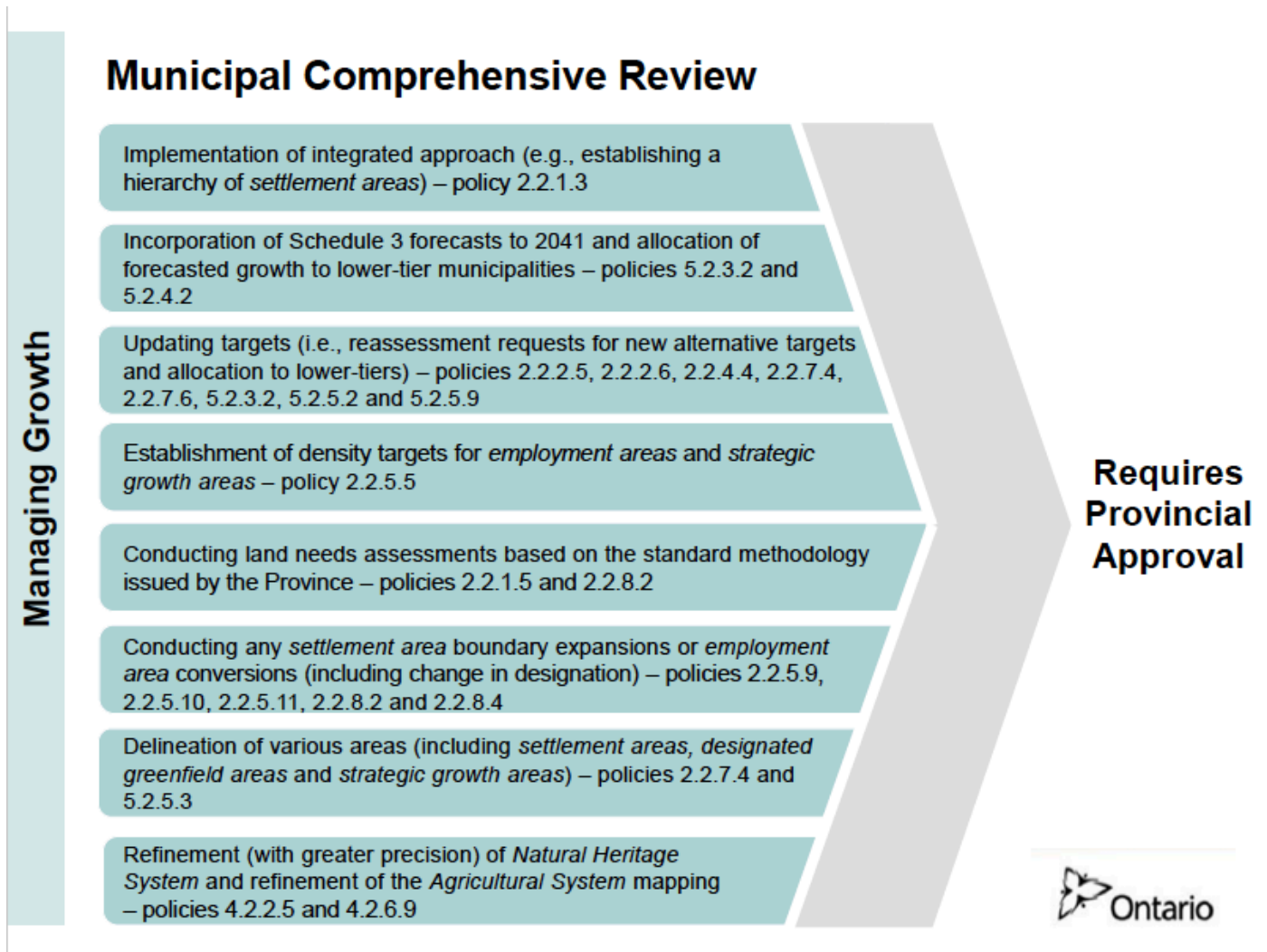
*MUNICIPALITIES WILL TRANSITION TO HIGHER TARGETS (SEE SLIDES BELOW FOR DETAILS)

PROVINCIAL DIRECTION BY END OF 2017- WHAT IS MISSING?



Source: Province of Ontario, Slide deck presented at Co-ordinated Land Use Planning Review Technical Briefing on June 5, 2017

NEED FOR **TRANSPARENCY** IN PROVINCIAL GUIDANCE/APPROVAL: COMMUNICATING WHAT IT MEANS FOR AN **OP/OPA** TO BE **IN CONFORMITY**



Source: Province of Ontario, Slide deck presented at Co-ordinated Land Use Planning Review Technical Briefing on June 5, 2017

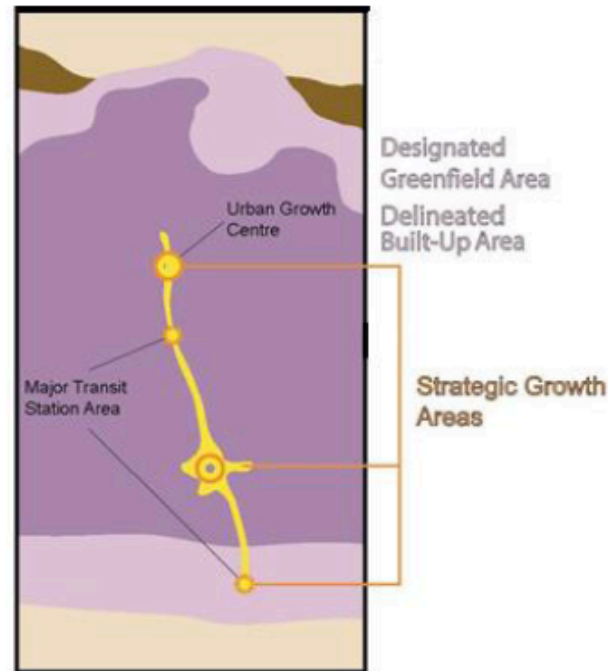
KEY POLICIES TO ACHIEVING COMPACT REGION

Managing Growth

Targets

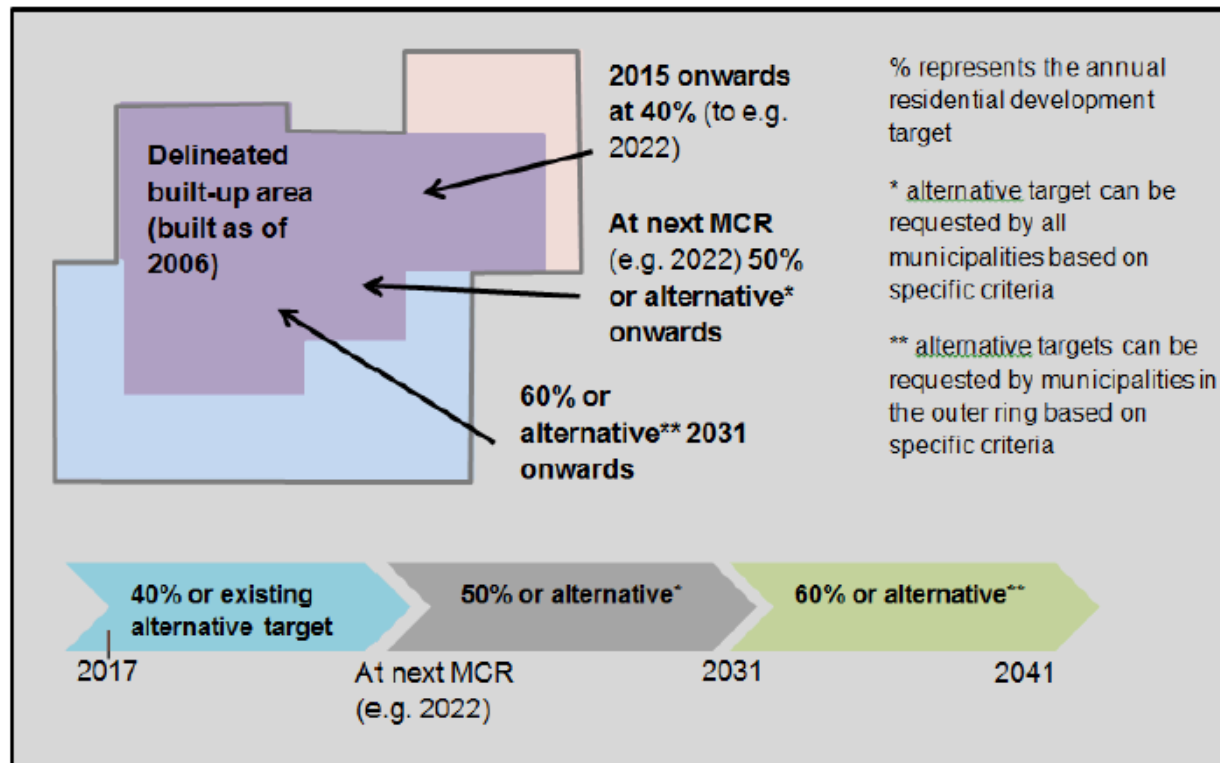
There are four specific targets within the Growth Plan, 2017 to be used for planning and managing growth.

1. Intensification target
2. *Designated greenfield area* (DGA) density target
3. *Urban growth centres* (UGCs) density targets
4. *Major transit station areas* (MTSAs) density targets



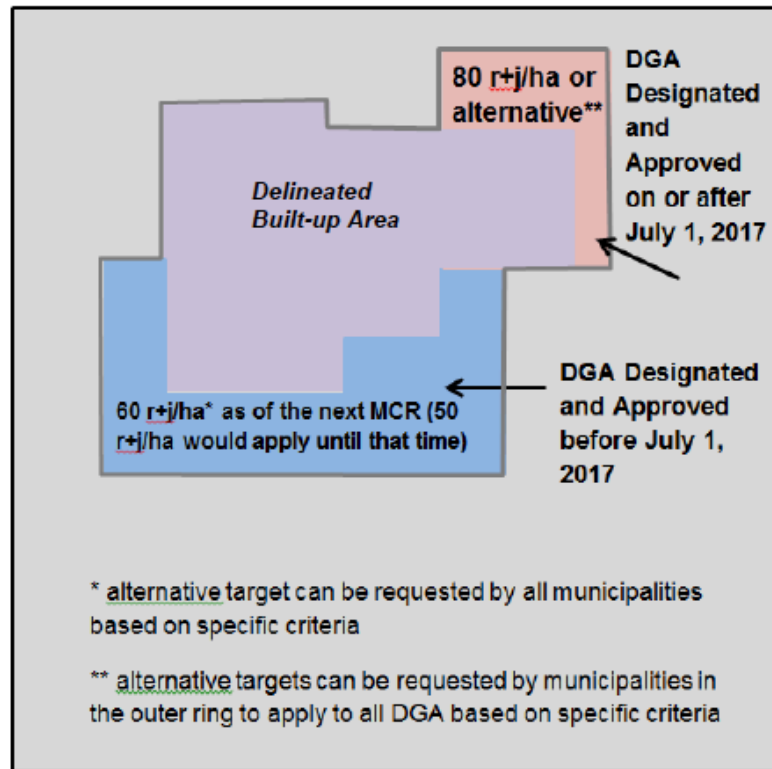
INTENSIFICATION FIRST

Intensification Target: Phased-In



TRANSITIONING TO HIGHER GREENFIELD DENSITY (DGA v1 VS DGA v2)

Designated Greenfield Area: Existing and Go-Forward (inner ring only)



STRATEGIC INTENSIFICATION

Major Transit Station Areas: Delineation



MTSA Targets*:

Subways:
200 r+j/ha

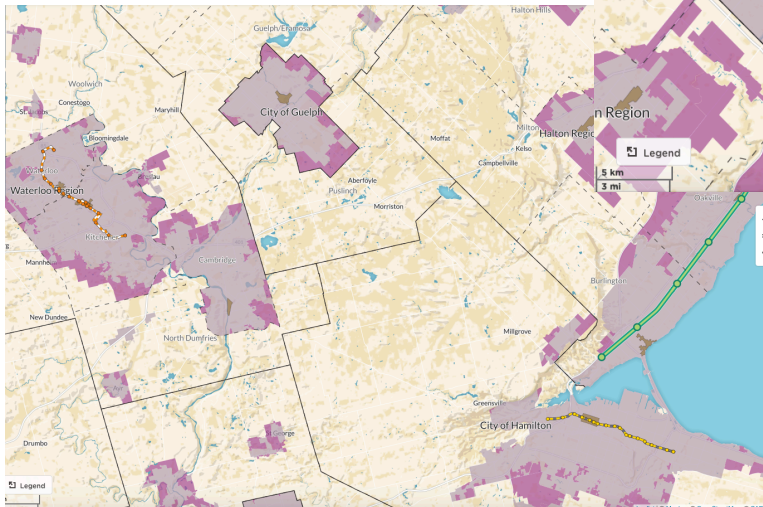
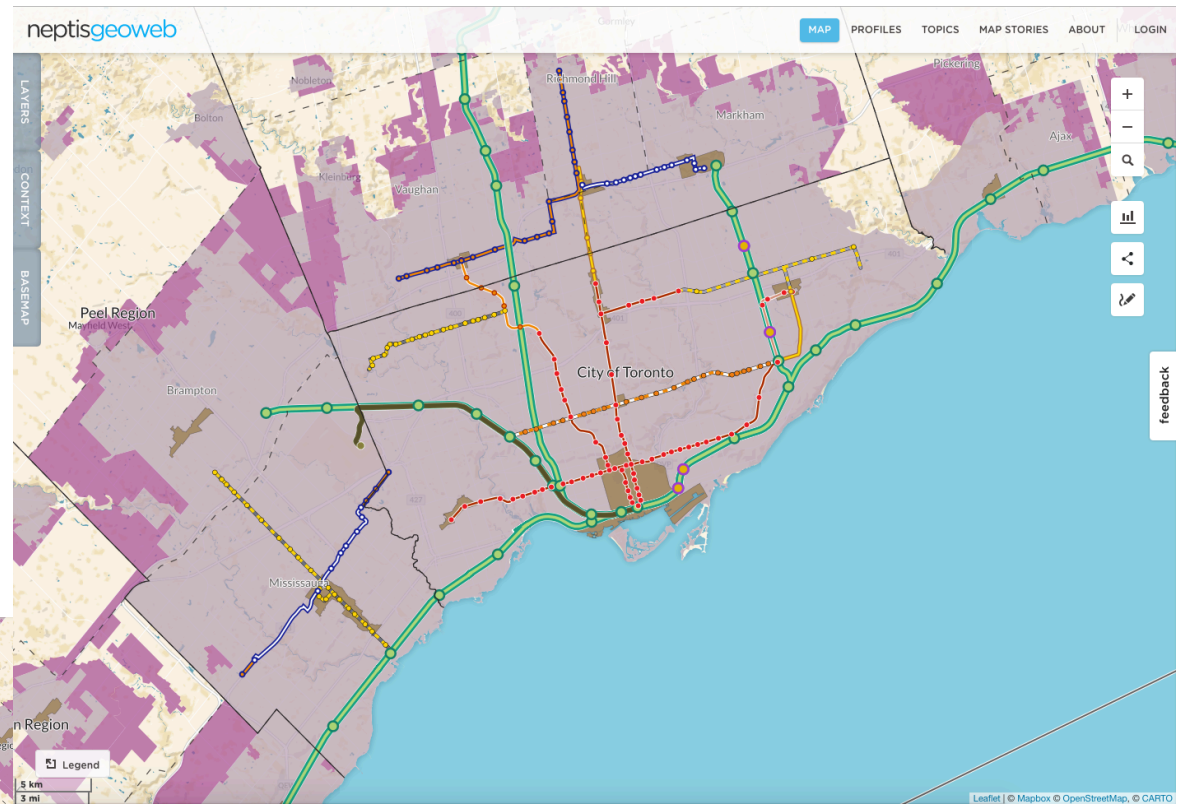
LRT/BRT:
160 r+j/ha

GO-RER:
150 r+j/ha

*Alternatives
allowed based
on criteria in
GP policy
2.2.4.4

OPPORTUNITIES FOR STRATEGIC INTENSIFICATION

~300 MTSAs



CONNECTING RESIDENTS TO JOBS VIA TRANSIT

Policy 2.2.5.5: Upper- and single-tier municipalities, in consultation with lower-tier municipalities, the Province, and other appropriate stakeholders, will each develop an employment strategy that

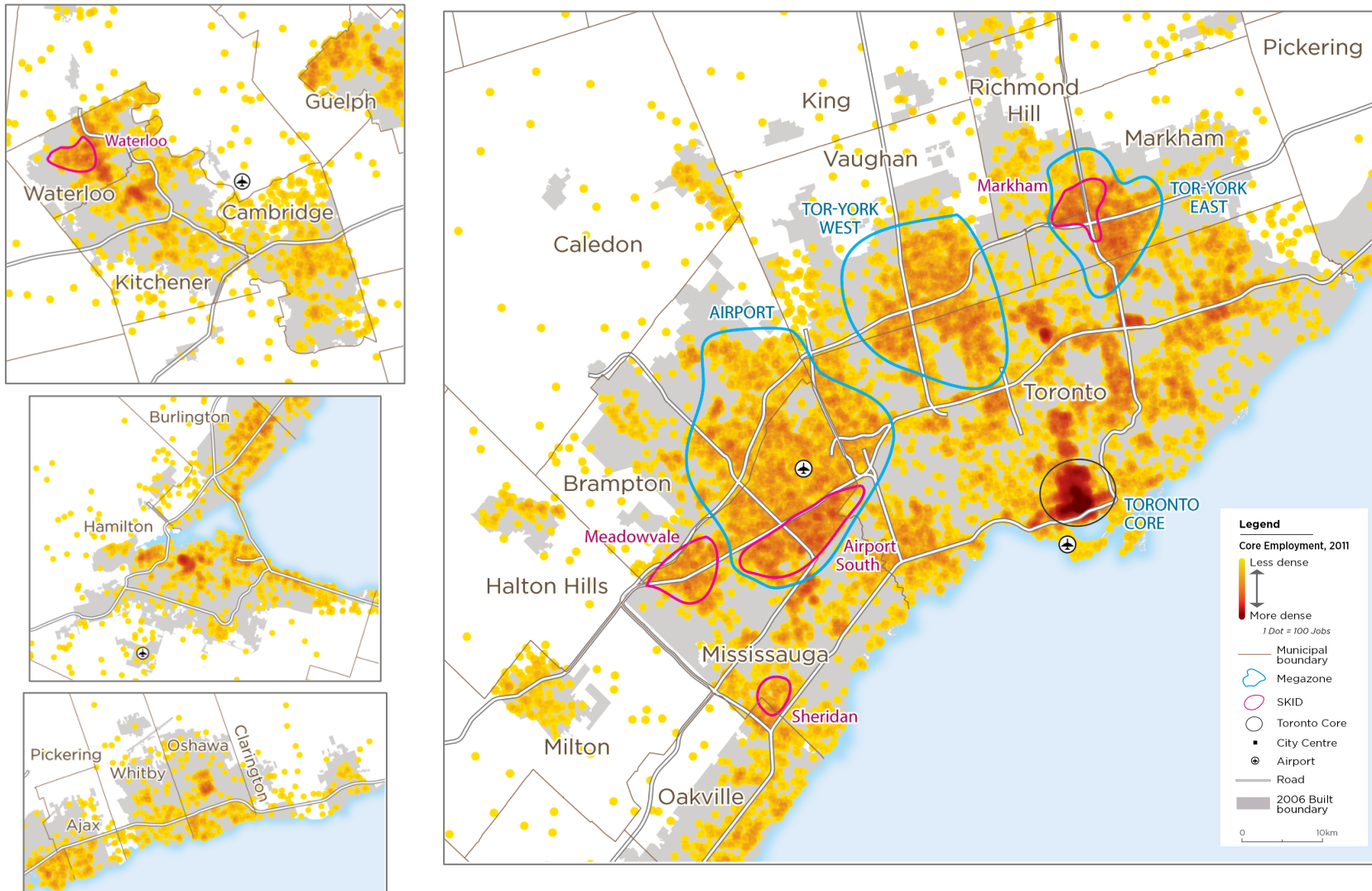
Opportunity to strengthen Growth Plan and begin to take a regional approach to employment planning, including better understanding of the implications of an economy that continues to change that leads to an increase/decrease in employment for certain sectors and increase/decrease in demand for land in certain sectors.

Policy 2.2.5.14 Upper- and single-tier municipalities, in consultation with lower-tier municipalities, the Province, and other appropriate stakeholders, are encouraged to undertake a co-ordinated approach to planning for large areas with high concentrations of employment that cross municipal boundaries and are *major trip generators*, on matters such as *transportation demand management* and economic development. If necessary, the Minister may identify certain areas that meet these criteria and provide direction for a co-ordinated approach to planning.

Opportunity to strengthen Growth Plan and connect more residents to jobs via transit.

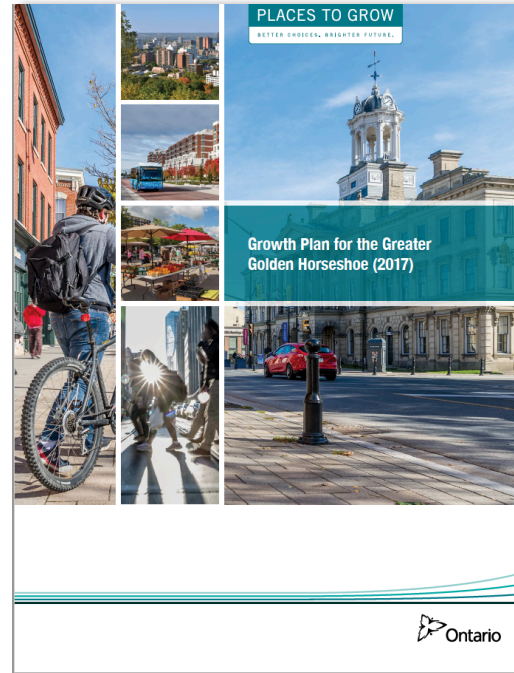
Source: Growth Plan, 2017

REGIONALLY-SIGNIFICANT EMPLOYMENT AREAS



Growth in knowledge based sectors has concentrated jobs in the downtown core and certain locations in the suburbs, While only 30% of commuter trips to downtown are by car, over 90% of commuter trips to the suburban employment megazones are by private automobile and contribute significantly to the region's congestion.

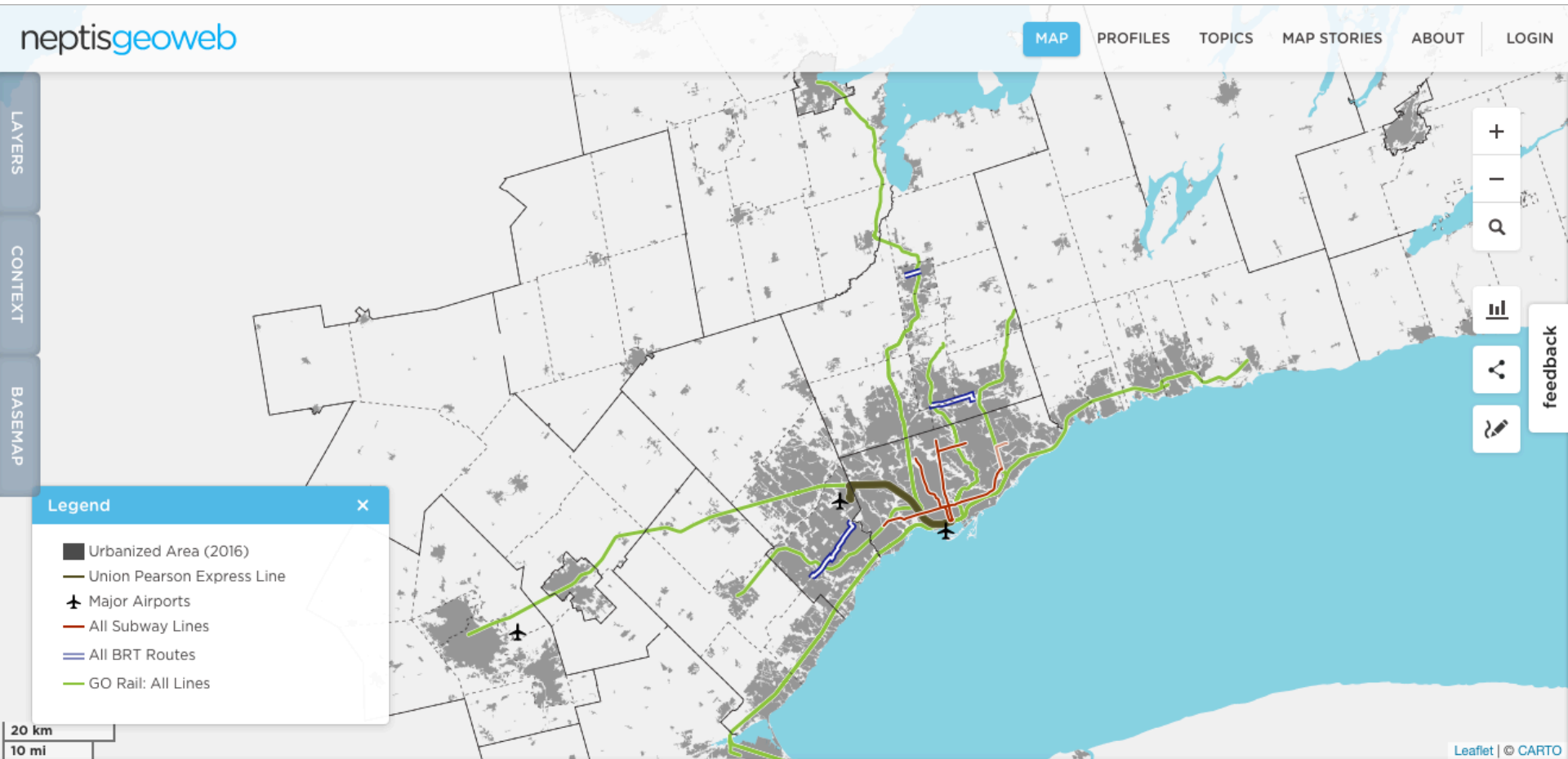
RTP 2.0 MUST ALIGN WITH GROWTH PLAN



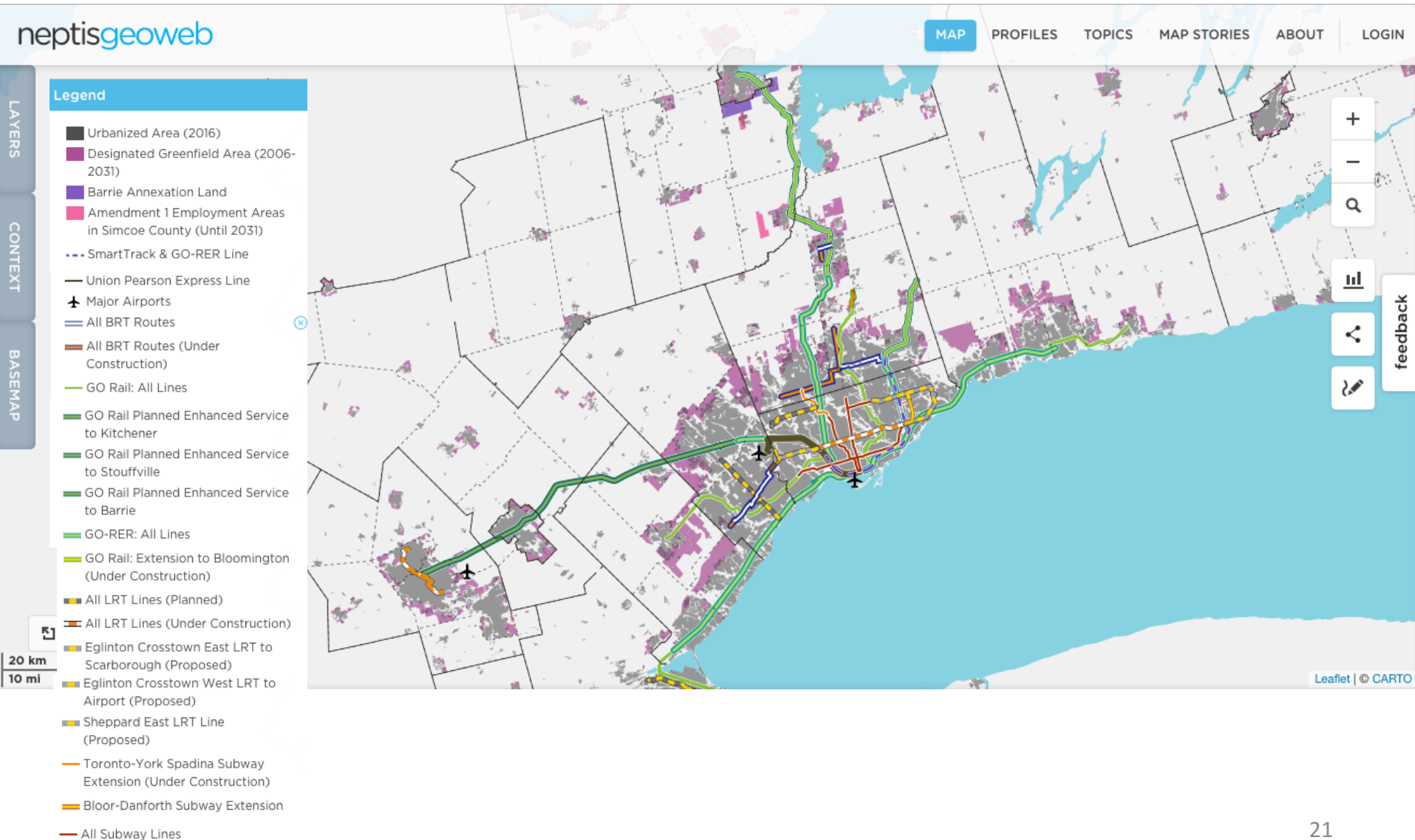
RTP v2 to be released in 2017



REGIONAL CONNECTIVITY IN 2016



LAND USE PLANNING MUST **SUPPORT** REGIONAL CONNECTIVITY IN 2031



MAKING IMPLEMENTATION A SUCCESS

- **CLEAR PROVINCIAL DIRECTION**
 - GUIDELINES FOR KEY POLICIES (CROMBIE REC 79)
 - INCLUDING ROLE OF LPAT & PROVINCIAL FACILITATOR
 - PUBLIC-FACING VERSION OF GUIDELINES (CROMBIE REC 87)
- **CHECKLIST FOR SUCCESSFUL OP/OPA CONFORMITY**
 - PUBLICLY-AVAILABLE CHECKLIST USED BY MMA TO APPROVE OP/OPAs
- **DATA COLLECTION & MONITORING PROGRAM (CROMBIE RECs 84 & 86)**
 - PROCESS MUST BE TRANSPARENT & DATA MUST BE PUBLICLY AVAILABLE
 - ON-GOING WORK TO GAUGE CHANGE IN ECONOMY AND BUILT FORM
 - PERFORMANCE METRICS FOR MEASURING ACHIEVEMENT OF POLICIES

THE NEPTIS GEOWEB

WWW.NEPTISGEOWEB.ORG

HOW CAN NEPTIS IMPROVE THE GEOWEB
TO BETTER SUPPORT COMMUNITY ENGAGEMENT IN GROWTH PLANNING?



Marcy Burchfield, Executive Director, Neptis
Foundation
mburchfield@neptis.org
647-244-8413

June 20, 2017